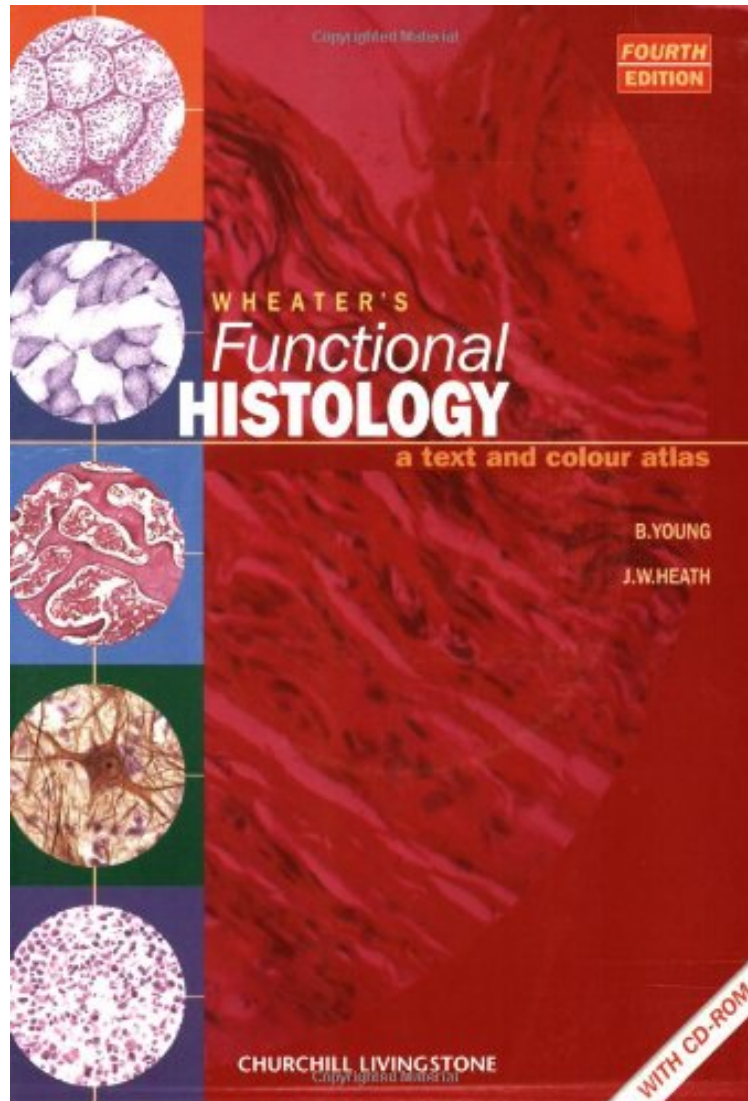


(Free read ebook) Wheater's Functional Histology: A Text and Colour Atlas (Book with CD-ROM)
(Functional Histology (Wheater's))

Wheater's Functional Histology: A Text and Colour Atlas (Book with CD-ROM) (Functional Histology (Wheater's))

Barbara Young BSc Med Sci (Hons) PhD MB BChir MRCP FRCPA, John W. Heath BSc(Hons)(Melbourne)
PhD(Melbourne)

DOC | *audiobook | ebooks | Download PDF | ePub



DOWNLOAD



READ ONLINE

#1069499 in Books 2000-05-15Ingredients: Example IngredientsOriginal language:EnglishPDF # 1 .75 x 8.32 x 11.64l, #File Name: 0443056129413 pages | File size: 37.Mb

Barbara Young BSc Med Sci (Hons) PhD MB BChir MRCP FRCPA, John W. Heath BSc(Hons)(Melbourne) PhD(Melbourne) : Wheater's Functional Histology: A Text and Colour Atlas (Book with CD-ROM) (Functional Histology (Wheater's)) before purchasing it in order to gage whether or not it would be worth my time, and all praised Wheater's Functional Histology: A Text and Colour Atlas (Book with CD-ROM) (Functional Histology (Wheater's)):

0 of 0 people found the following review helpful. this one is in excellent condition. This is a great textbook for self-learning ...By Ms PatFor a used book, this one is in excellent condition. This is a great textbook for self-learning and I recommend it highly. This book was recommended by a professor of Anatomy and Physiology at Berkley University in a classroom setting (about 2006).0 of 0 people found the following review helpful. Required textbookBy S BosworthAs I purchased a used textbook, the book does show minimal signs of use such as dull edges and previous owner's name, however they do not affect the overall quality of the textbook. The product arrived promptly with two day shipping. The price was very reasonable, as well. I would recommend both the textbook and seller.0 of 0 people found the following review helpful. fantastic bookBy W. MusaPerfect book for functional histology. Pages and size are a bit different than previously printed issues by the publisher, but they added a margin area at the bottom of the page which is nice for taking notes. Pages are quality (not saying they are worse than older additions, better I would think).

(Churchill Livingstone) Univ. of Sydney, Australia. The emphasis of this atlas remains on human tissues. Many new color illustrations. Line diagrams have been updated and changed to color for clarity. Updated diagrams and tables throughout. Previous edition: c1993. For students. System requirements not cited. Softcover.

"This is an excellent book that should be used by everyone starting to learn histology. It is superbly simple and colourful with informative diagrams that are clearly labelled! This book makes histology enjoyable: much better than staring for hours on end down a microscope and not knowing what you are looking at! I like the way it divides thesections into the different body systems. The index is very useful. High-quality illustrations are provided in this book and the printing quality is excellent. I will happily recommend it to all science and medical students!" "BMA Awards 2007". "concise relevant text with excellent photographs, excellently reproduced. Wheater's remains an excellent book and is highly recommended." "Professor JA Lee, ACP News" --unknown "This is an excellent book that should be used by everyone starting to learn histology. It is superbly simple and colourful with informative diagrams that are clearly labelled! This book makes histology enjoyable: much better than staring for hours on end down a microscope and not knowing what you are looking at! I like the way it divides thesections into the different body systems. The index is very useful. High-quality illustrations are provided in this book and the printing quality is excellent. I will happily recommend it to all science and medical students!" "BMA Awards 2007". concise relevant text with excellent photographs, excellently reproduced. Wheater's remains an excellent book and is highly recommended." "Professor JA Lee, ACP News --unknown About the Author Barbara Young, BSc, Med Sci (Hons), PhD, MB, BChir, MRCP, FRCPA, Consultant Pathologist, North Glasgow University Hospitals NHS Trust, Western Infirmary, Glasgow, UK; Alan Stevens, MBBS, FRCPath, Senior Lecturer in Pathology, University of Nottingham Medical School and Honorary Consultant Pathologist, Queen's Medical Centre, University Hospital NHS Trust, Nottingham, UK; and James S. Lowe, BMedSci, BMBS, DM, FRCPath, Professor of Neuropathology, University of Nottingham Medical School, Honorary Consultant Pathologist, Queen's Medical Centre, University Hospital NHS Trust, Nottingham, UK