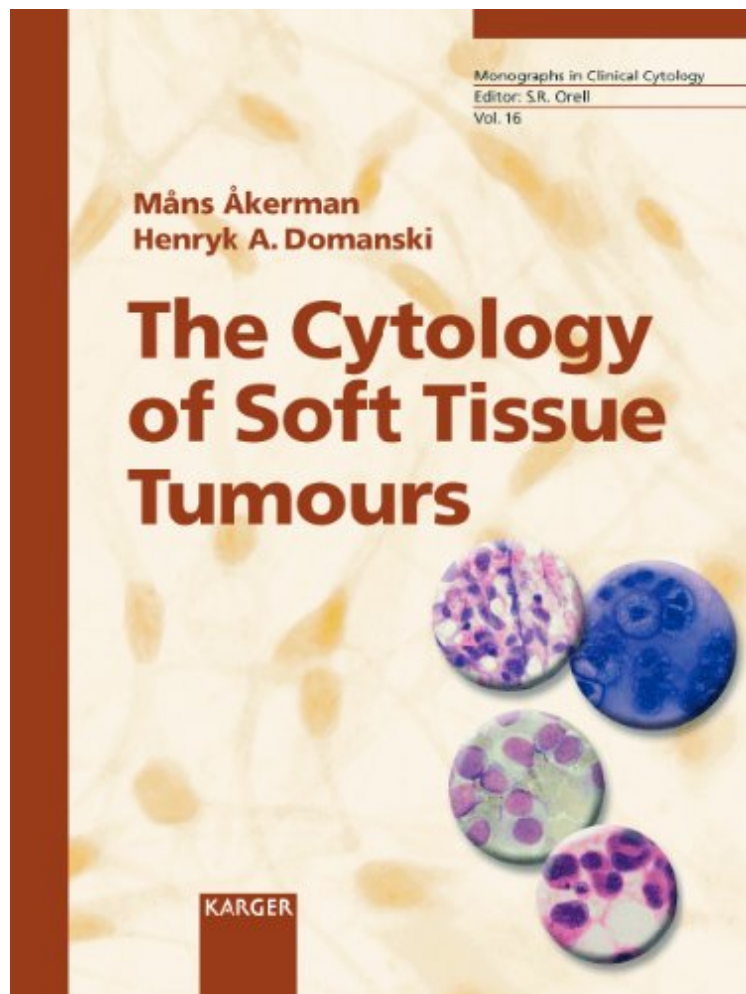


(Read free ebook) The Cytology of Soft Tissue Tumours: Including contributions by Rydholm, A. (Lund); Carln, B. (Lund) (Monographs in Clinical Cytology, Vol. 16)

The Cytology of Soft Tissue Tumours: Including contributions by Rydholm, A. (Lund); Carln, B. (Lund) (Monographs in Clinical Cytology, Vol. 16)

M. kerman, H.A. Domanski

*DOC | *audiobook | ebooks | Download PDF | ePub*



[Download](#)

[Read Online](#)

#7989552 in Books S Karger Pub 2003-08-18Original language:English 11.25 x 5.75 x .50l, #File Name: 3805575947116 pages | File size: 39.Mb

M. kerman, H.A. Domanski : The Cytology of Soft Tissue Tumours: Including contributions by Rydholm, A. (Lund); Carln, B. (Lund) (Monographs in Clinical Cytology, Vol. 16) before purchasing it in order to gage whether or not it would be worth my time, and all praised The Cytology of Soft Tissue Tumours: Including contributions by Rydholm, A. (Lund); Carln, B. (Lund) (Monographs in Clinical Cytology, Vol. 16):

A Karger 'Publishing Highlights 18902015' title In the last few years, the primary diagnosis of soft tissue tumours has emerged as an important new target for fine needle aspiration (FNA). The purpose of this book is to facilitate the cytological evaluation of FNA smears from soft tissue tumours and to suggest cytological criteria for histotype diagnoses. Its primary aim is to describe and illustrate not only the most common types but also those rare tumours where cytological features have been largely described in case reports and in small series. The diagnostic use of ancillary methods is discussed and illustrated, and, in order to facilitate the diagnostic work-up in FNA samples, smears are also classified according to their principal microscopic patterns. The selection of entities presented, their diagnostic features and differential diagnostic considerations are mainly based on the experience with FNA in the primary diagnosis of soft tissue tumours in patients referred to the Musculoskeletal Tumour Centre at the University Hospital in Lund, Sweden over the last 30 years. The illustrations have mainly been culled from cases in the files of the Department of Pathology and Cytology, Lund University Hospital. Soft tissue tumours are relatively rare and often difficult to correctly diagnose in fine needle aspirates. Therefore, this publication should be welcomed by all cytopathologists involved in the FNA diagnosis of tumours as a valuable addition to their benchside textbooks.