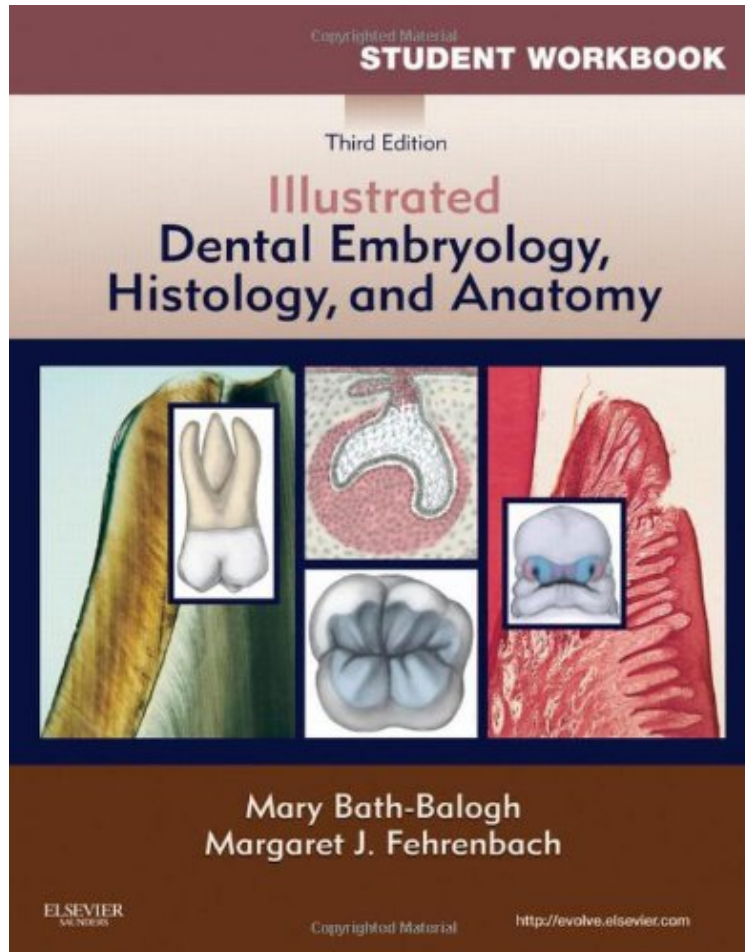


Student Workbook for Illustrated Dental Embryology, Histology and Anatomy, 3e

Mary Bath-Balogh BA BS MS, Margaret J. Fehrenbach RDH MS
DOC | *audiobook | ebooks | Download PDF | ePub



DOWNLOAD



READ ONLINE

#919896 in Books Saunders 2010-12-16 Original language: English PDF # 1 .40 x 8.40 x 10.80l, 1.41 #File Name: 1437725104248 pages | File size: 54.Mb

Mary Bath-Balogh BA BS MS, Margaret J. Fehrenbach RDH MS : Student Workbook for Illustrated Dental Embryology, Histology and Anatomy, 3e before purchasing it in order to gage whether or not it would be worth my time, and all praised Student Workbook for Illustrated Dental Embryology, Histology and Anatomy, 3e:

0 of 0 people found the following review helpful. Missing PagesBy Madison SimpsonThe workbook came with almost 30 pages missing. I was expecting it to be in perfect condition. There is no reason for someone to buy a workbook when it has a lot of the pages missing.1 of 1 people found the following review helpful. Great Book...Great PriceBy LenaThis workbook gives you extra practice with each chapter you will cover, great for a visual learner! Would recommend this to any dental professional!!!0 of 0 people found the following review helpful. Five StarsBy Rachel MCVery satisfied.

Master the content from your textbook with this helpful study tool! Corresponding to the chapters in *Illustrated Dental Embryology, Histology, and Anatomy, 3rd Edition*, this workbook helps you understand and apply material with case studies, labeling exercises, helpful guidelines, and more. It includes 32 removable flashcards for quick, convenient review and study, and prepares you for national boards for dental professionals with its case-based focus. A logical organization allows you to focus on those areas in which you need more practice, with units on: (1) labeling, (2) terminology, (3) tooth structure, and (4) case-based application. Detailed case studies include radiographs, clinical photos, profiles, complaints, health histories, intraoral examination data, and multiple-choice questions, promoting critical thinking and providing preparation for board examinations. Labeling exercises provide unlabeled images from the textbook to allow you to identify the different structures. Additional 32 detachable flashcards help you master tooth morphology and tooth numbering. Clear line drawings of the permanent anterior and posterior teeth include the five views of the tooth (labial, lingual, mesial, distal, and incisal) on the front and a tooth description on the back. Guidelines for Tooth Drawing include detailed instructions, tips, and dimensions for drawing each permanent tooth. Infection Control for Extracted Teeth presents guidelines in an easy-to-follow numbered list, providing the proper procedures for the collection and inspection of extracted teeth. Occlusal Evaluation shows how to perform an occlusal evaluation using the necessary equipment and steps. Glossary exercises include crossword puzzles and word searches for practice and review of key terminology. Three-hole-punched and perforated pages are easy to fit into a binder, and pages can be removed and turned into instructors for assignments or extra credit. New case studies are added, and clinical and radiographic photographs and questions are expanded on existing cases, helping you prepare for the case-based focus of the national boards. Expanded labeling (structure identification) exercises include additional developmental, microbiological, and anatomical structures for more practice in correctly identifying various parts or structures.

The workbook is highly recommended for students, featuring case studies and review exercises. *Journal of Dental Hygiene*