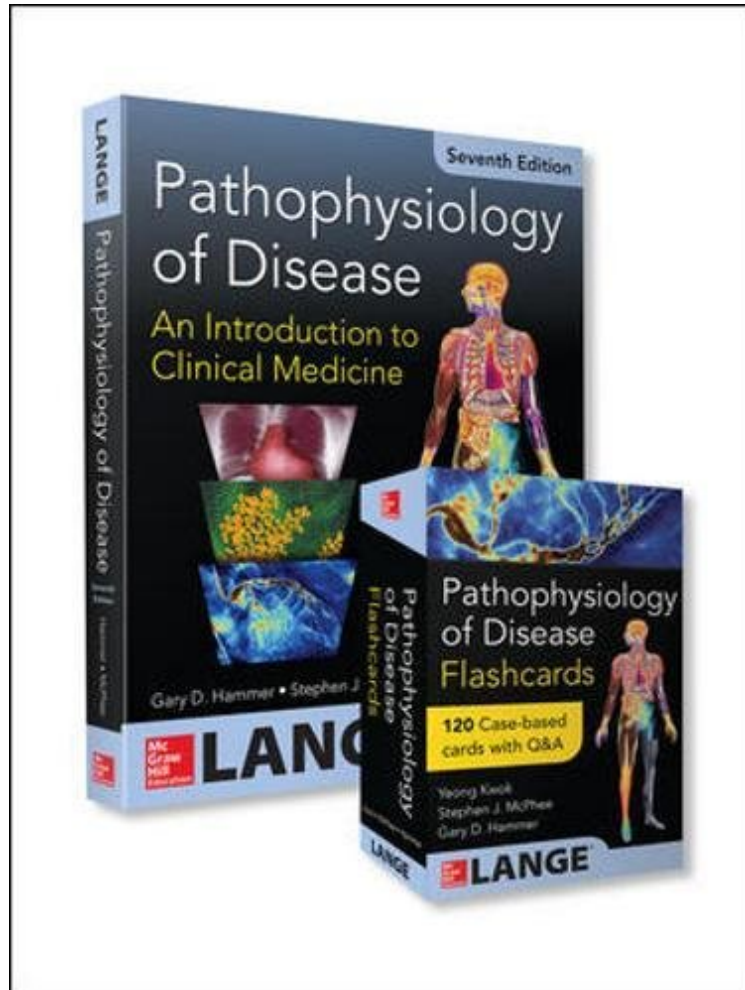


## Pathophysiology 7th Edition, Book and Flashcards

Gary Hammer, Stephen J. McPhee  
DOC | \*audiobook | ebooks | Download PDF | ePub



[Download](#)

[Read Online](#)

#2559171 in Books 2014-06-03 Original language: English PDF # 1 11.00 x 2.50 x 8.50l, .0 #File Name: 0071850511762 pages | File size: 15.Mb

**Gary Hammer, Stephen J. McPhee : Pathophysiology 7th Edition, Book and Flashcards** before purchasing it in order to gauge whether or not it would be worth my time, and all praised Pathophysiology 7th Edition, Book and Flashcards:

DOLLAR-SAVING COMBINATION OFFER: SAVE 15% on these two essential resources for understanding the pathophysiologic basis of the most common diseases encountered in clinical practice Package includes the classic textbook Pathophysiology of Disease, Seventh Edition and the companion flashcard set Pathophysiology of Disease: An Introduction to Clinical Medicine, Seventh Edition by Gary D. Hammer and Stephen J. McPhee The goal of this trusted text is to introduce you to clinical medicine by reviewing the pathophysiologic basis of the symptoms and signs of 120 diseases commonly encountered in medical practice. The authors, who are all experts in their respective fields,

have provided a concise review of relevant normal structure and function of each body system, followed by a description of the pathophysiologic mechanisms that underlie several common diseases related to that system. Each chapter of *Pathophysiology of Disease* concludes with a collection of case studies with relevant questions that are designed to test your understanding of the pathophysiology of each clinical entity discussed. These 120 case studies allow you to apply your knowledge to specific clinical situations. The final chapter of the book is devoted to detailed answers to the questions raised by each case. The set also includes *Pathophysiology of Disease: An Introduction to Clinical Medicine Flashcards* by Gary D. Hammer and Stephen J. McPhee. These flashcards provide a case-based introduction to pathophysiology and offer a fun, fast way to test your knowledge of more than 100 disease signs and symptoms most often encountered in clinical practice. Each of the 120 cards include a case with open-ended questions on one side, and bulleted answers and explanations on the flip side. Cases are based on content from the acclaimed *Pathophysiology of Disease: An Introduction to Clinical Medicine, Seventh Edition*.